

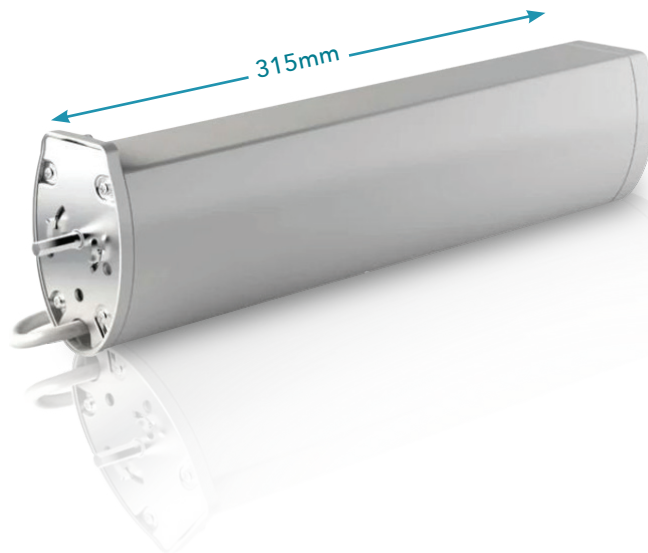
# BLINDTEX CURTAIN MOTOR RTS & WT

# BLINDTEX CURTAIN MOTOR RTS & WT



## WIDE VOLTAGE SMART MOTOR

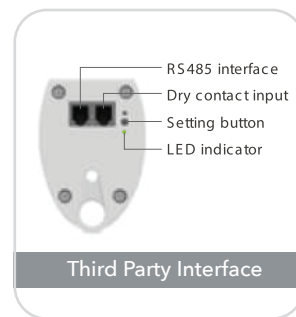
<b>Radio+</b>	↔ Bi-RF
<b>WiFi</b>	↔ Bi-RF    📶 Wi-Fi
<b>matter</b>	↔ Bi-RF    📶 Wi-Fi    🏠 Matter



100-240V	2Nm 14cm/s
Rated Current 0.3A	Rated Power 30W
Max. Load 100KG	

### COMMON PARAMETER

Radio Frequency 433 MHz	Max. Limit Turns ∞	Protection Degree IP20
Running Time >6 min	Certification CE	Working Temperature 0~40°C



### REGULAR FEATURES

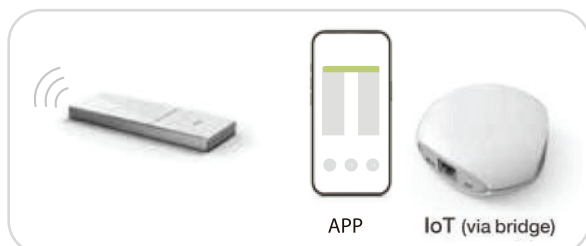
- Switch Direction
- Stall Protection
- Built-in Receiver
- Hotel Mode
- Manual Override
- Dry Contact Input
- RS485 Input
- Auto Limit Setting

- Multiple Stop Positions
- Stop/Run by Pulling Fabric
- Speed Regulation
- Limit Positions Adjusting

### APP CONTROL FEAT

- Percentage Control
- Status Feedback
- Radio Signal Indication
- Scan & Program
- Scene Control
- Timer

### CONTROL SYSTEM



Mobile Application, Google Home, Alexa, Matter Compatible





**Innov8 Products FZC**  
**Area M6 - 10 SAIF Zone, Sharjah,**  
**United Arab Emirates**



**Phone: +971 6557 8051**



**Email: [sales@blindtex.com](mailto:sales@blindtex.com)**



**Web: [www.blindtex.com](http://www.blindtex.com)**

**UNITED KINGDOM**  
**Blindtex LTD**

4B Wigan Road, Bolton, Lancashire  
BL3 5PZ - United Kingdom  
Tel: **+44 1204 954999**  
Web: [www.blindtex.co.uk](http://www.blindtex.co.uk)  
Email: [sales@blindtex.co.uk](mailto:sales@blindtex.co.uk)

**BAHRAIN**

**Blindtex Blinds & Curtains WLL**

Office 728, Building 33,  
Road 1802 Block 318, Exhibition Road Bahrain  
Tel: **+973 3222 0440**  
Web: [www.blindtex.bh](http://www.blindtex.bh)  
Email: [bahrain@blindtex.com](mailto:bahrain@blindtex.com)